

Well-Designed, Careful Manufacture Planetary Centrifugal Mixer (Vacuum type) SMIDA MIXER TMV-700TT

Introduction:

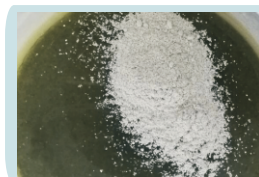
- ▶ Rotation/revolution, With high power vacuum pump, Even mixing of high-viscosity material using 2 centrifugal forces: rotation and revolution in a short time.
- ▶ Mixing capacity varies from a few grams up to 700grams by using different containers, it is able to deal with small amount experiment to mass production.
- ▶ Up to 10 preset programs (Can be customized), every program can be set to 5 different mixing time and speed, it is able to deal with different types of the materials.
- ▶ Max rotation speed is 2500rpm, even the high viscosity material can be mixed evenly.
- ▶ The key parts are all imported and the big brand in the industry, which guarantees the stability of high load long-term use
- ▶ Some functions can be modified according to customer's request.



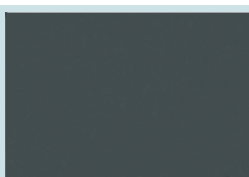
TMV-700TT Effects of mixing:



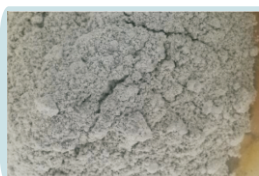
Phosphor Powder



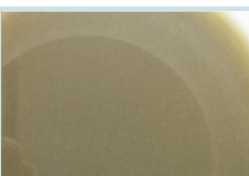
Epoxy Resin + Nanomaterials



Experimental Clay



Epoxy Resin +Fiberglass

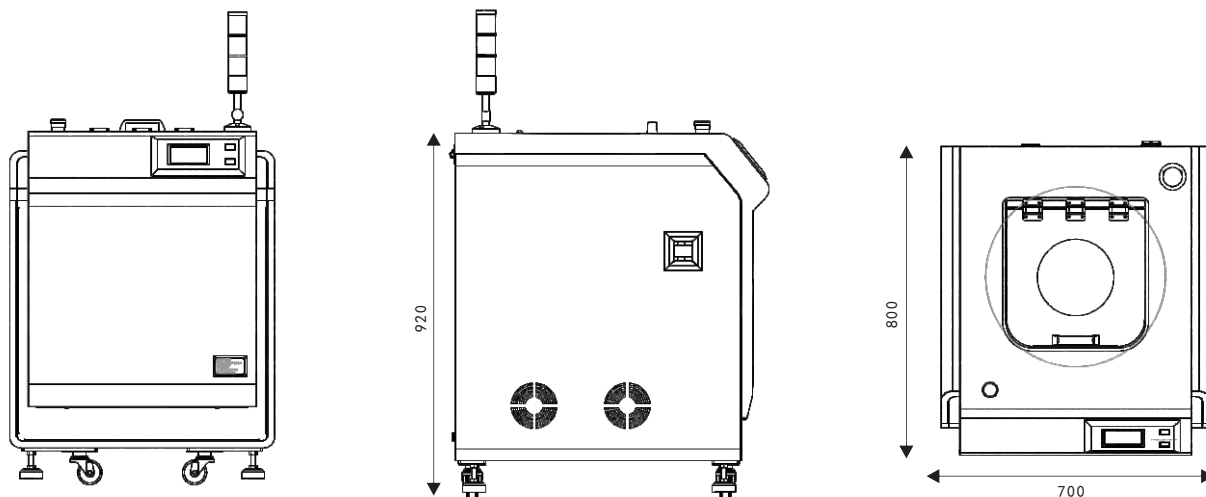


Well-Designed, Careful Manufacture


Planetary Centrifugal Mixer (Vacuum type)

SMIDA MIXER TMV-700TT

TMV-700TT Dimensions:



TMV-700TT Specifications:

Model	TMV-700TT		Vacuum method	High precision vacuum sensor	Dimensions	HL690*W700*H810mm
Product Name	Vacuum Planetary Centrifugal Mixer		Vacuum pump capacity	21 m³/h	Weight	Approx. 150Kg
Mixing Methods	Vacuum type • Using 2 centrifugal forces: rotation and revolution		Reach the set range of the vacuum	Atmosphere approximately 101Kpa-0.1kpa	Safetly Function	Lock Sensor, Vibration Sensor, Emergency Stop Button.
Continuous Working Time	30mins		Rotation Speed	0-2500rpm, Variable per10	Connectors (Optional)	
Memory Storage	20 groups programs		Revolution Speed	Rotation/Revolution speed can be adjusted		
Capacity	Atmosphere	350ml*2 (700g)	Power Consumption	Single Phase 220V, 50Hz/60Hz		
	Vacuum	350ml*2 (700g)		Standby mode50W, Working 2.3KW		
Preset Program	5 different mixing speed & time		Working Condition	10~35°C 35~85%relative humidity (RH)		

Warm prompt:

- The appearance and specifications are subject to change without prior notice.
- This machine is not explosion-proof specifications, Please don't stir have dangerous or harmful substances to human body.

