

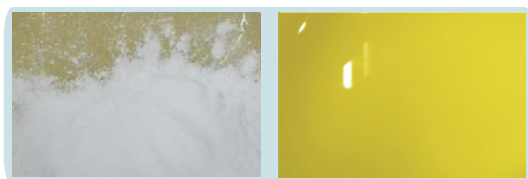
Well-Designed, Careful Manufacture Planetary Centrifugal Mixer (Vacuum type) SMIDA MIXER TMV-1500T

Introduction:

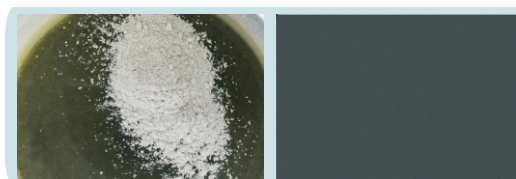


- ▶ Rotation/revolution, With high power vacuum pump, Even mixing of high-viscosity material using 2 centrifugal forces: rotation and revolution in a short time.
- ▶ Mixing capacity varies from a few grams up to 1500grams by using different containers, it is able to deal with small amount experiment to mass production.
- ▶ Up to 10 preset programs (Can be customized), every program can be set to 5 different mixing time and speed, it is able to deal with different types of the materials.
- ▶ Max rotation speed is 2500rpm, even the high viscosity material can be mixed evenly.
- ▶ The key parts are all imported and the big brand in the industry, which guarantees the stability of high load long-term use
- ▶ Some functions can be modified according to customer's request.

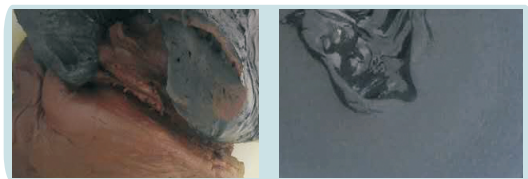
TMV-1500T Effects of mixing:



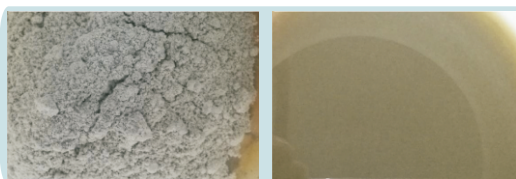
Phosphor Powder



Epoxy Resin + Nanomaterials



Experimental Clay



Epoxy Resin + Fiberglass

SHENZHEN SMIDA INTELLIGENT EQUIPMENT CO., LTD.

Tel : 0755-27858540 (Shenzhen Headquarters) 0512-66838308 (Suzhou office)
Fax : 0755-27856125-615 E-mail : smdcn@smida.com.cn
Add : 803A, 8F, Skyworth Digital Building, Songbai Road West, Shiyan, Bao'an District, Shenzhen
Room 1022, building 1, ganglong city, 556 changjiang road, high-tech zone, SuZhou
Web : www.smida.com.cn (official website) www.smidahk.com.cn (Alibaba)

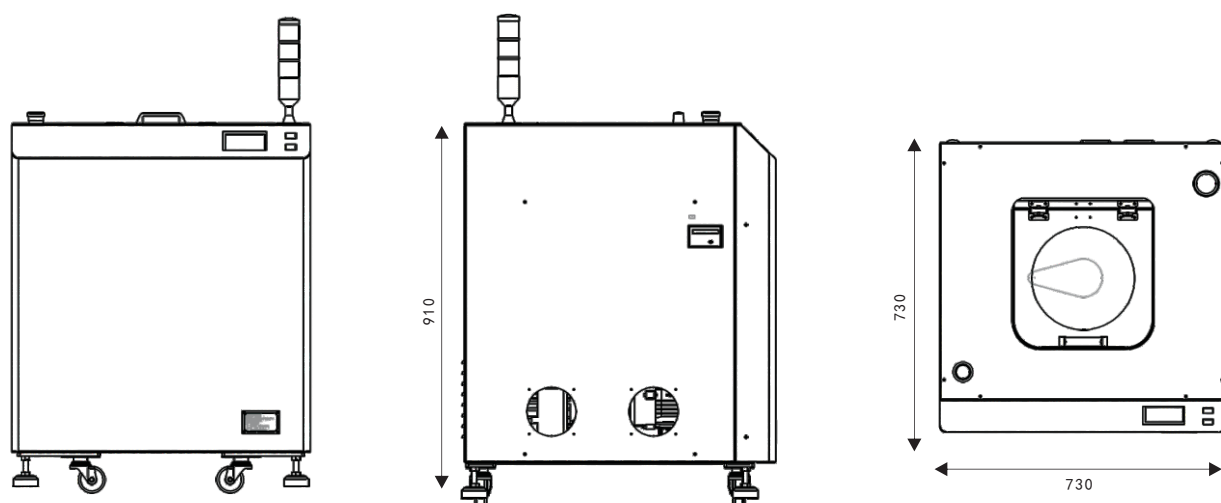


Well-Designed, Careful Manufacture


Planetary Centrifugal Mixer (Vacuum type)

SMIDA MIXER TMV-1500T

TMV-1500T Dimensions:



TMV-1500T Specifications:

Model	TMV-1500T		Vacuum method	High precision vacuum sensor	Dimensions	L730*W730*H880mm
Product Name	Planetary Centrifugal Mixer		Vacuum pump capacity	21m ³ /h	Weight	Approx. 200Kg
Mixing Methods	Vacuum type · Using 2 centrifugal forces: rotation and revolution		Reach the set range of the vacuum	Atmosphere approximately 101Kpa-0.1kpa	Safety Function	Lock Sensor, Vibration Sensor, Emergency Stop Button.
Continuous Working Time	30mins		Rotation Speed	0-2500rpm, Variable per10	<div>Adapters (Optional)</div> 	
Memory Storage	10 groups programs		Revolution Speed	Rotation/Revolution speed 1:1 is fixed		
Capacity	Atmosphere	1500ml, 750g*2	Power Consumption	Single Phase 220V, 50Hz/60Hz		
	Vacuum	1500ml, 750g*2		Standby mode 50W, Working mode 1.2KW		
Preset Program	5 different mixing speed & time		Working Condition	10~35℃ 35~85%relative humidity (RH)		
Warm prompt:						
· The appearance and specifications are subject to change without prior notice.						
· This machine is not explosion-proof specifications, Please don't stir have dangerous or harmful substances to human body.						

SHENZHEN SMIDA INTELLIGENT EQUIPMENT CO., LTD.

Tel : 0755-27858540 (Shenzhen Headquarters) 0512-66838308 (Suzhou office)
 Fax : 0755-27856125-615 E-mail : smdcn@smida.com.cn
 Add : 803A, 8F, Skyworth Digital Building, Songbai Road West, Shiyan, Bao'an District, Shenzhen
 Room 1022, building 1, ganglong city, 556 changjiang road, high-tech zone, SuZhou
 Web : www.smida.com.cn (official website) www.smidahk.com.cn (Alibaba)

