

Well-Designed, Careful Manufacture Planetary Centrifugal Mixer (Vacuum type) SMIDA MIXER TMV-1500TT

Introduction:

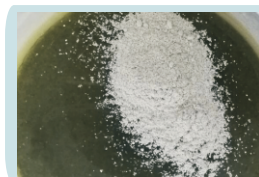


- ▶ Rotation/revolution, With high power vacuum pump, Even mixing of high-viscosity material using 2 centrifugal forces: rotation and revolution in a short time.
- ▶ Mixing capacity varies from a few grams up to 1500grams by using different containers, it is able to deal with small amount experiment to mass production.
- ▶ Up to 10 preset programs (Can be customized), every program can be set to 5 different mixing time and speed, it is able to deal with different types of the materials.
- ▶ Max rotation speed is 2500rpm, even the high viscosity material can be mixed evenly.
- ▶ The key parts are all imported and the big brand in the industry, which guarantees the stability of high load long-term use
- ▶ Some functions can be modified according to customer's request.

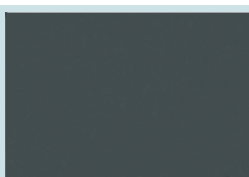
TMV-1500TT Effects of mixing:



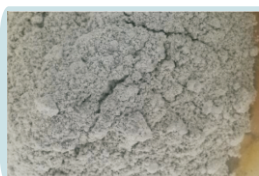
Phosphor Powder



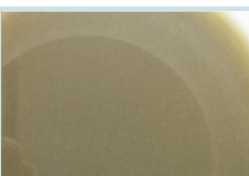
Epoxy Resin + Nanomaterials



Experimental Clay



Epoxy Resin +Fiberglass



SHENZHEN SMIDA INTELLIGENT EQUIPMENT CO., LTD.

Tel : 0755-27858540 (Shenzhen Headquarters) 0512-66838308 (Suzhou office)
Fax : 0755-27856125-615 E-mail : smdcn@smida.com.cn
Add : 12th Floor, Building B, Quanju Industrial Park, Pinggang, Jiangshi Road, Gongming Street, Guangming New District, Shenzhen, China
Room 401, Building 26, Phoenix City, 288 Changjiang North Road, Kunshan City, Suzhou
Web : www.smida.com.cn (official website) www.smidahk.com.cn (Alibaba)



WeChat



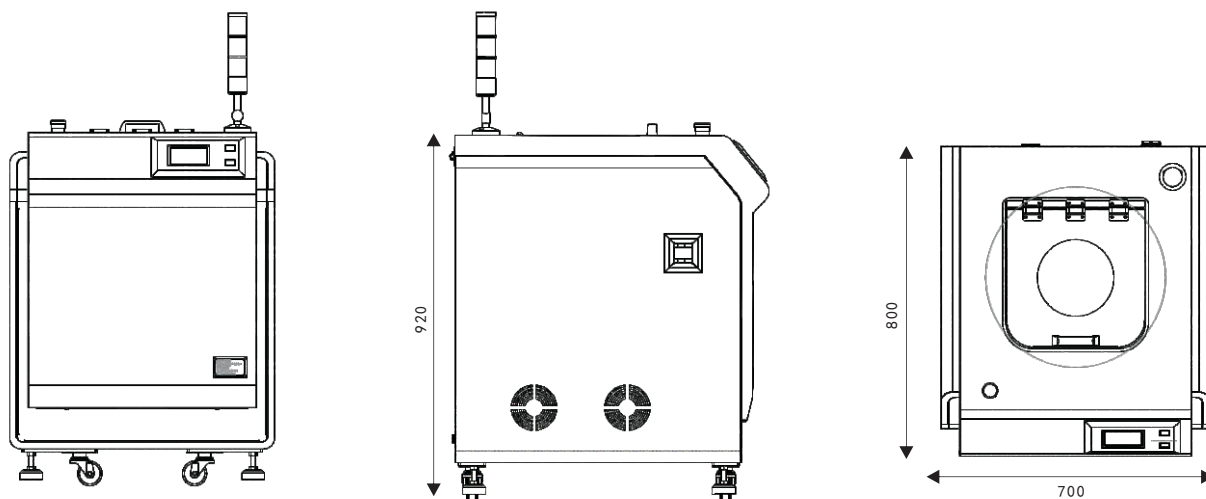
Web

Well-Designed, Careful Manufacture


Planetary Centrifugal Mixer (Vacuum type)

SMIDA MIXER TMV-1500TT

TMV-1500TT Dimensions:



TMV-1500TT Specifications:

Model	TMV-1500TT		Vacuum method	High precision vacuum sensor	Dimensions	L730*W730*H910mm
Product Name	Vacuum Planetary Centrifugal Mixer		Vacuum pump capacity	21 m³/h	Weight	Approx. 220kg
Mixing Methods	Vacuum type · Using 2 centrifugal forces: rotation and revolution		Reach the set range of the vacuum	Atmosphere approximately 101Kpa-0.1kpa	Safetly Function	Lock Sensor, Vibration Sensor, Emergency Stop Button.
Continuous Working Time	30mins		Rotation Speed	0-2500rpm	Adapters (Optional)	
Memory Storage	20 groups programs		Revolution Speed	Rotation/Revolution speed can be adjusted		
Capacity	Atmosphere	1500ml, 750g*2	Power Consumption	Single Phase 220V, 50Hz/60Hz		
	Vacuum	1500ml, 750g*2		Standby mode 50W, Working mode 2.3KW		
Preset Program	5 different mixing speed & time		Working Condition	10~35°C 35~85%relative humidity(RH)		

Warm prompt:

- The appearance and specifications are subject to change without prior notice.
- This machine is not explosion-proof specifications, Please don't stir have dangerous or harmful substances to human body.

SHENZHEN SMIDA INTELLIGENT EQUIPMENT CO., LTD.

Tel : 0755-27858540 (Shenzhen Headquarters) 0512-66838308 (Suzhou office)
Fax : 0755-27856125-615 E-mail : smdcn@smida.com.cn
Add : 12th Floor, Building B, Quanju Industrial Park, Pinggang, Jiangshi Road, Gongming Street, Guangming New District, Shenzhen, China
Room 401, Building 26, Phoenix City, 288 Changjiang North Road, Kunshan City, Suzhou
Web : www.smida.com.cn (official website) www.smidahk.com.cn (Alibaba)

